



## DISPLAY CABINET

# ELLINOR 911

Ellinor is a stylish range with a classic design. Ellinor is available in many versions to meet everyone's needs. The furniture family consists of chairs, sofas, armchairs and cabinets. Ellinor Art no. 911 is only a display case top, which can be supplemented with the cabinet Ellinor 910. The top is in birch and the cabinet itself has lockable glass doors and two movable shelves and lighting.

The storage furniture in the Ellinor-series fits together with the sofa series Ellinor and Elin.

Ellinor är ritad av Marie Norell Möller.

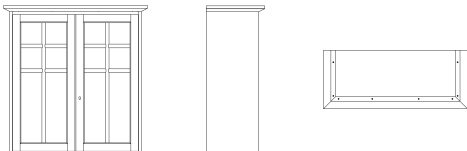
## DIMENSIONS

Height	99 cm
Width	96 cm
Depth	39 cm



Any color available as an option on this product.

## VIEWS



## ADDED VALUE

- Classic storage cabinet
- Lockable glass doors
- Removable shelf
- Any color
- Tested for public use and meets the requirements for durability & safety, set forth in the following standard, EN 16121

## ACCESSORIES

- Frame in birch
- Frame in any color

## REUSE

- Solid wood

## NC Nordic Care AB

Box 30 573 35 Tranås Sweden  
+46(0)140-38 40 60, info@ncnordiccare.se  
ncnordiccare.se



## GLASS

Cleaned with window cleaner or washing-up liquid diluted in water.

## WOOD

Wood is a living material whose grain from the very beginning has a natural variation in pattern, color tone and luster. The wood is affected by, among other things, the season, heat and humidity. That wood is a living material means:

- Screws need to be re-tightened regularly, at least once a year.
- Solid table tops can naturally warp by up to 0.5%.
- Light from the sun and lighting can cause permanent color and light differences in the surface, so allow the entire wooden surface to be exposed to the same amount of light.

Out of concern for the environment, we paint a large part of our range with water-based surface treatments. This means:

- Spills of coffee and other liquids need to be wiped up immediately.
- For cleaning, hand washing detergent or pH-neutral detergents and lukewarm water are recommended. Wipe off with clean water and wipe dry. Do not use cleaning agents that are alkaline, aggressive, contain abrasives or solvents.
- For disinfection, non-alcohol-based agents are recommended, e.g. Virkon or DAX Alco Free. Alcohol-based agents must not be used.